

PART OF SEC. 1, T.7N., R.1E., & PART OF SEC. 36, T.8N., R.1E., S.L.B. & M.
POWDER MOUNTAIN WEST SUBDIVISION

86

PHASE I
 LOTS 7-20, 25, 26

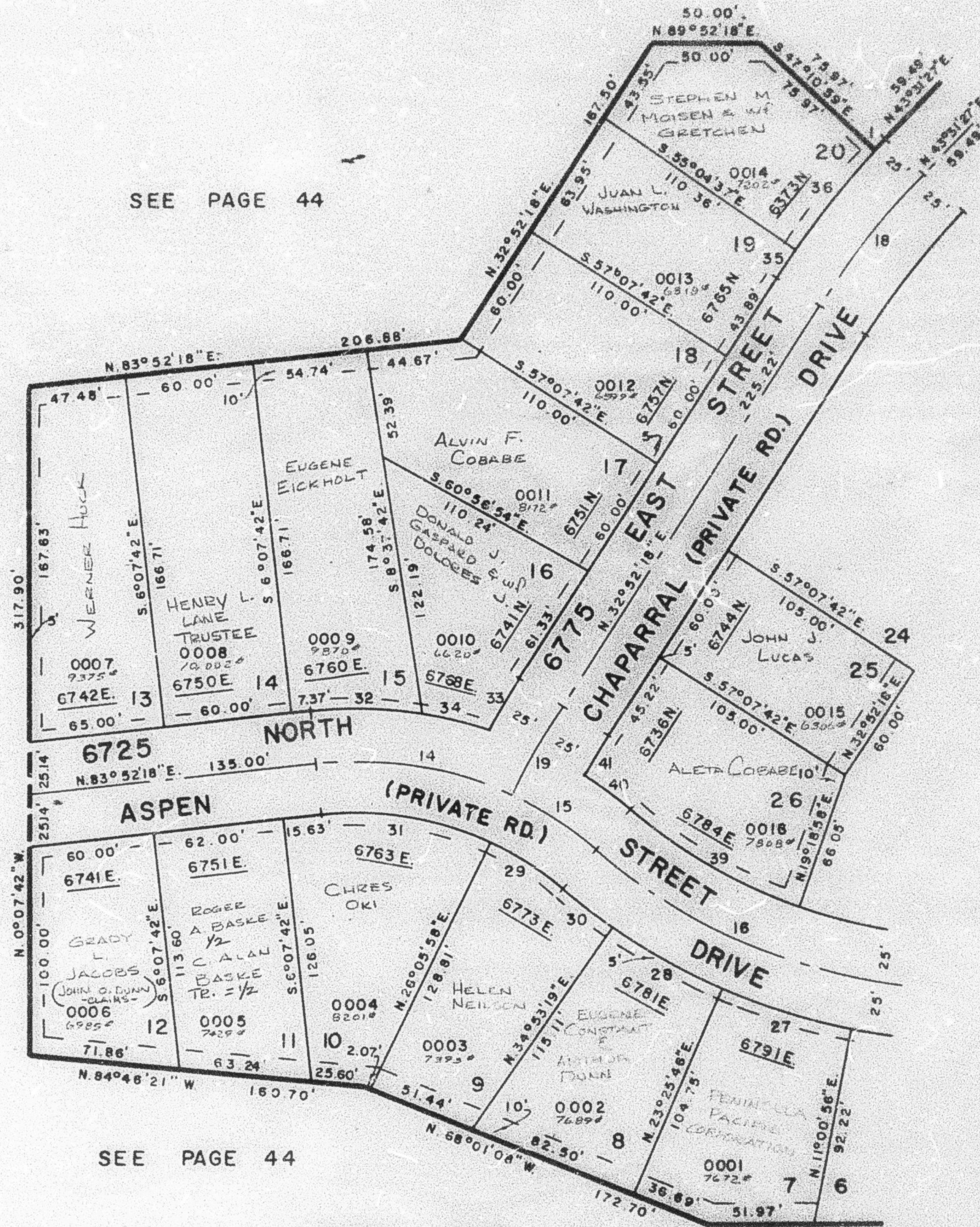
IN WEBER COUNTY

SCALE 1"=50'

TAXING UNIT 90

PREFIX 23-066

EXCEPT WHERE OTHERWISE SHOWN
 ALL LOTS OWNED BY
 POWDER MOUNTAIN, INC.



SEE PAGE 44

CURVE DATA

	14	15	16	18	19	27	28	29	30	31	32	33	34	35	36	
A	0°42'26"	32°00'00"	15°00'00"	56°15'00"	10°39'09"	7°00'00"	12°24'50"	11°27'33"	14°46'20"	5°58'59"	32°13'40"	15°57'20"	3°46'27"	9°03'17"	2°03'05"	7°53'38"
R	450.00'	175.00'	175.00'	275.00'	425.00'	392.86'	300.00'	300.00'	150.00'	300.00'	150.00'	200.00'	417.86'	200.00'	450.00'	450.00'
ARC	5.50'	97.74'	45.81'	269.98'	79.02'	48.00'	65.00'	60.00'	38.67'	31.33'	84.37'	55.70'	27.52'	31.81'	16.11'	62.00'
T	2.78'	50.18'	23.04'	146.99'	39.62'	24.03'	32.63'	30.10'	19.44'	15.68'	43.33'	28.03'	13.77'	15.84'	8.06'	31.08'
CH	5.55'	96.47'	45.68'	259.27'	78.90'	47.97'	64.87'	59.90'	38.57'	31.31'	83.28'	55.52'	27.52'	31.57'	16.11'	61.95'
C.B.	N43°10'14"E	S80°07'42"E	S56°37'42"E	S77°15'12"E	N38°11'53"E	N29°22'18"E	S72°46'39"E	S60°50'27"E	S56°30'52"E	S52°07'11"E	S80°00'52"E	S88°09'02"E	N30°59'05"E	S75°38'43"E	N33°53'50"E	N38°52'12"E

	39	40	41
A	21°33'20"	7°36'19"	3°21'46"
R	250.00'	200.00'	367.86'
ARC	94.05'	76.55'	21.59'
T	47.59'	13.29'	10.80'
CH	93.50'	26.23'	21.59'
C.B.	S59°54'22"E	S52°55'51"E	N31°01'25"E

FOR COMPLETE ENG. DATA
 SEE ORIG. DED. PLAT. IN
 BOOK 22, PAGE 45